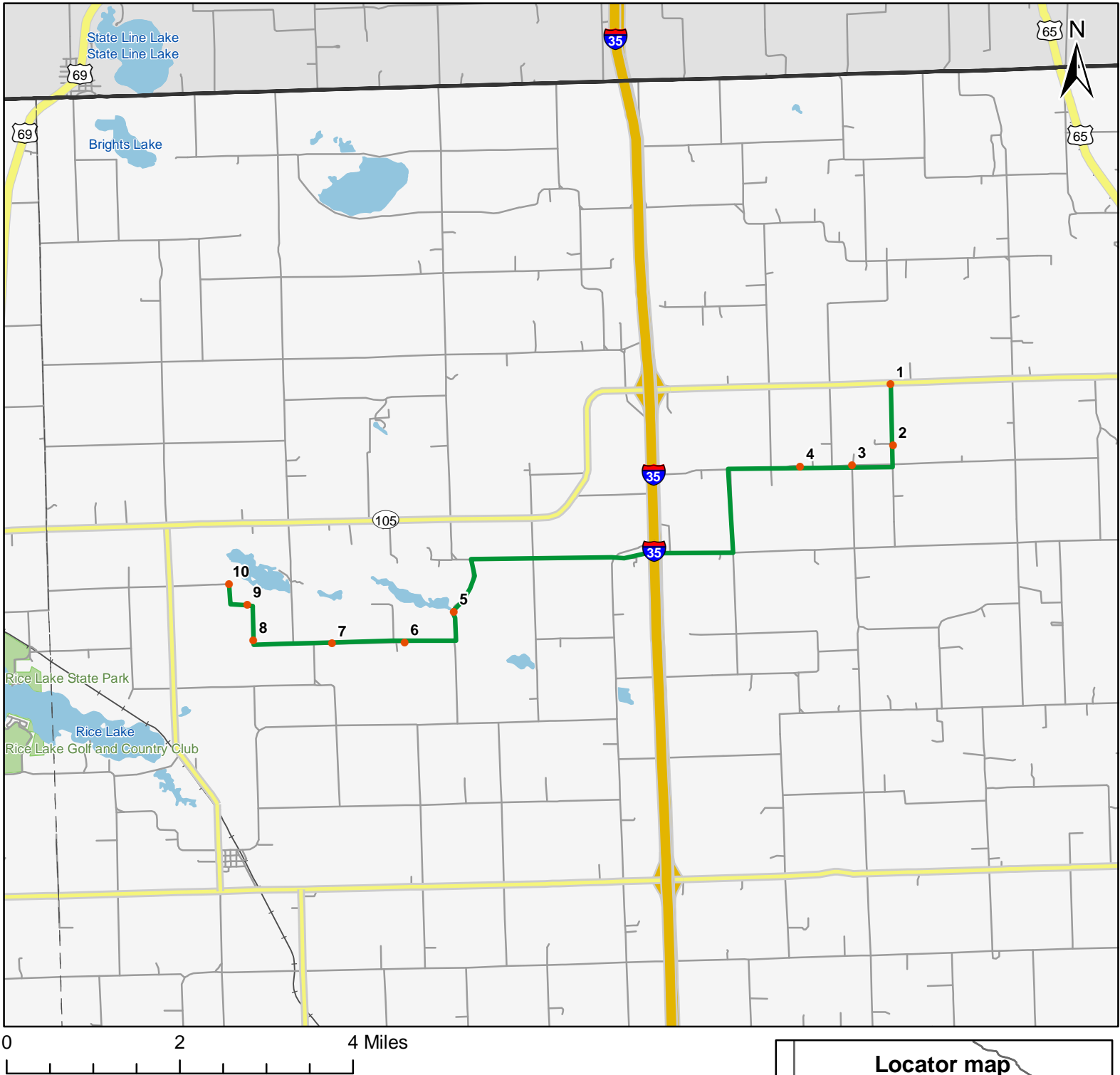


North American Amphibian Monitoring Program

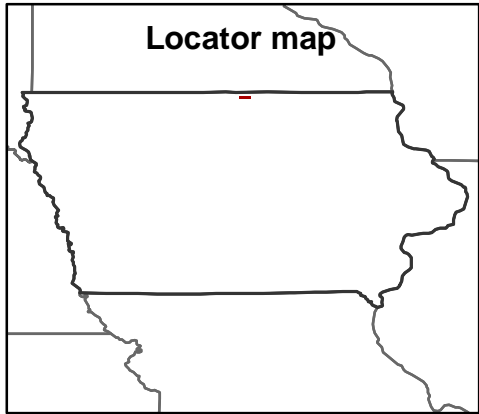


Route: 360104 Northwood, IA



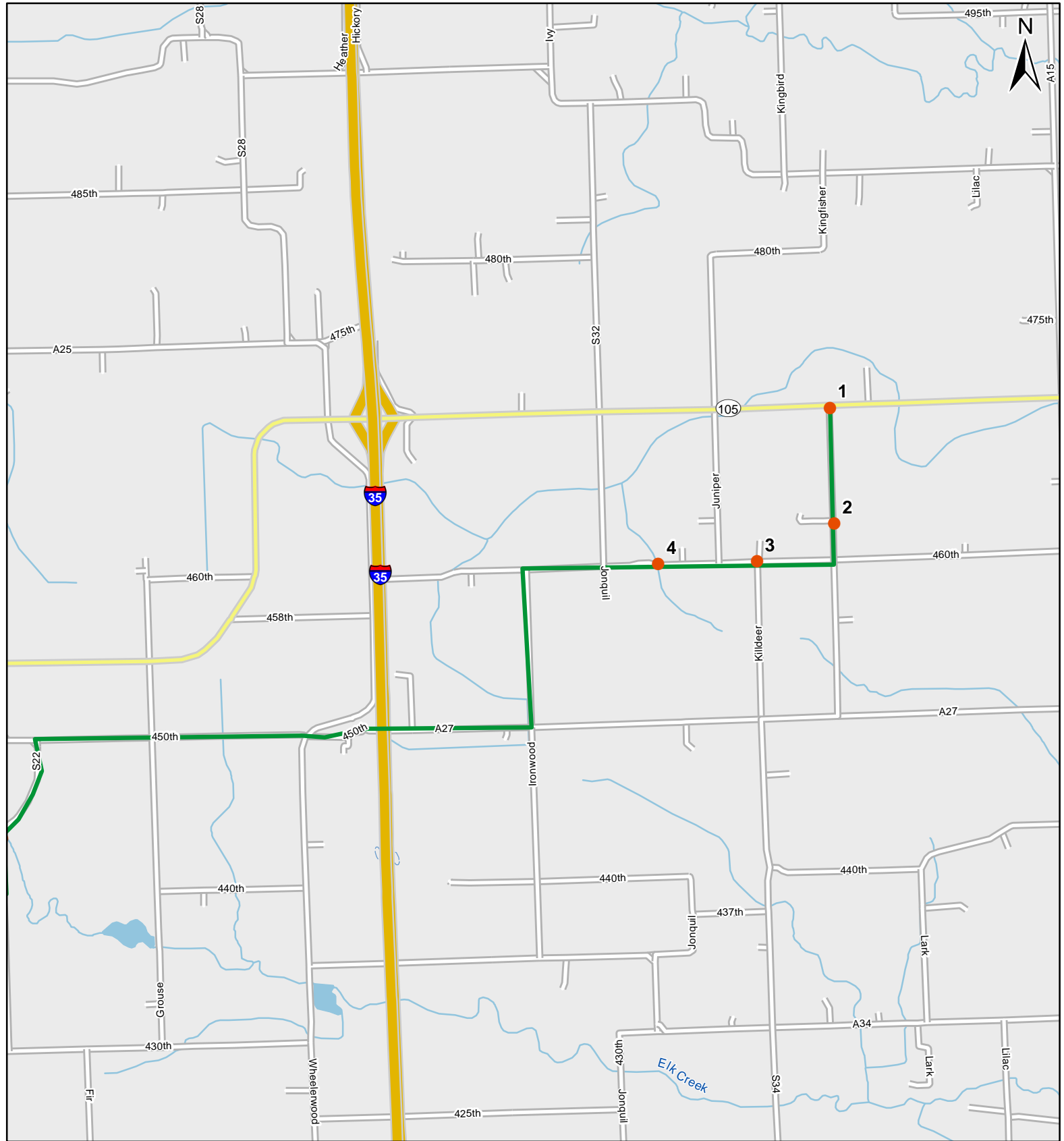
Legend

- Stop Locations
- Route Path



For more information, please visit the NAAMP website:
<http://www.pwrc.usgs.gov/naamp/>

Route: 360104 Northwood, IA

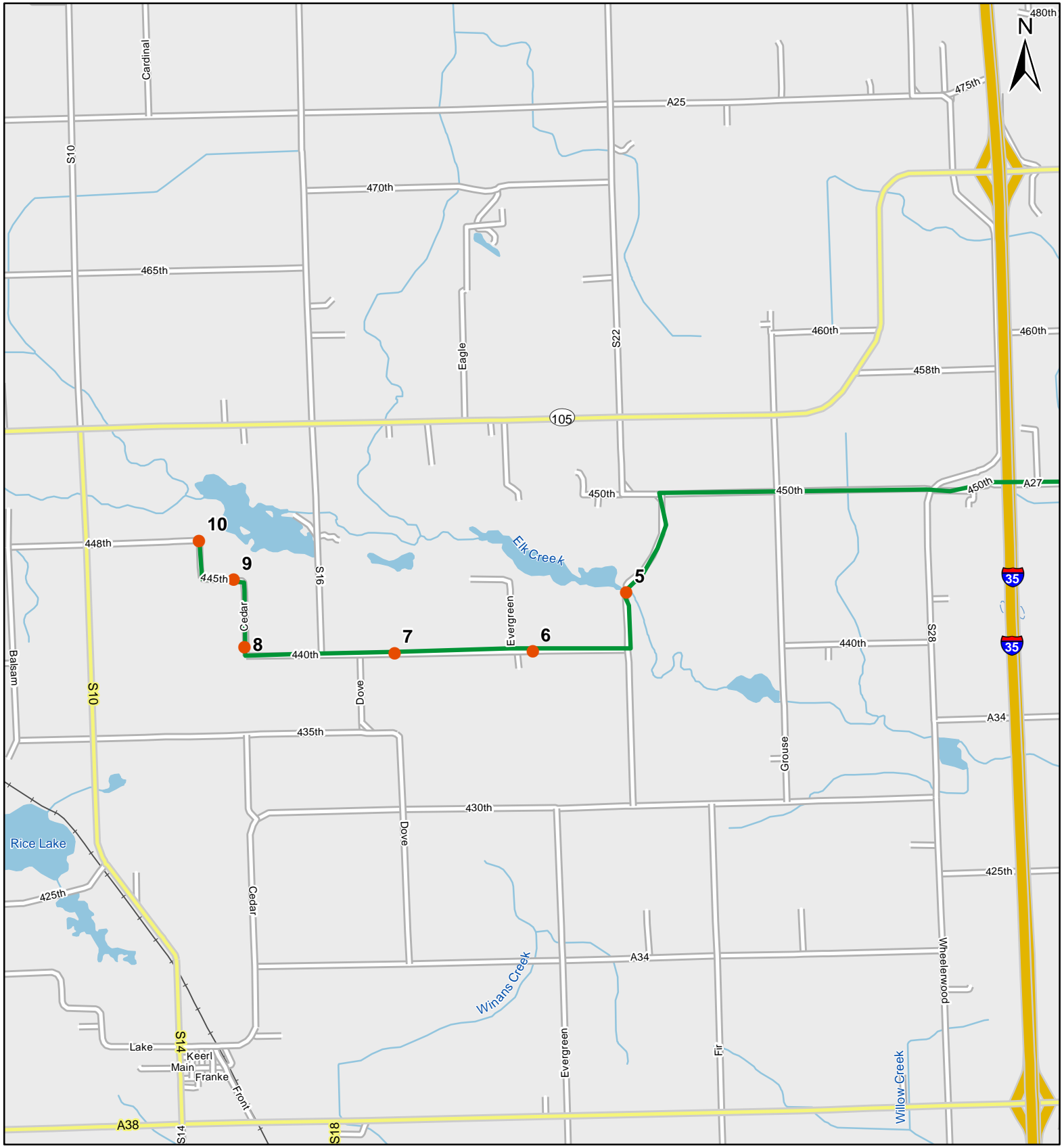


1:50,000

Legend

- Stop Locations
- Route Path

Route: 360104 Northwood, IA



0 1 Miles

1:50,000

Legend

- Stop Locations
- Route Path



Frog and Toad Call Survey Route Description

Route ID **360104**

Established:

Site Number	Name	County	Latitude	Longitude	Directions
1	0	Worth	43.4440002	-93.290802	Ditch/culvert @ corner of highway 1.5 and kingfisher
2	0.7	Worth	43.4332008	-93.2907028	Wooded and grassy draw between crop fields. Across from house. 0.7 miles south of 105/kingfisher intersection. East side of kingfisher.
3	1.4	Worth	43.4299011	-93.3007965	corner grassy ditch around small woodlot at SW corner of kill deer and 460th.
4	2	Worth	43.4299011	-93.3134995	Grassed waterway either side of 460th
5	7.8	Worth	43.4059982	-93.3990021	Site is 0.1 miles south of bridge where area on both sides of road is marshy with lost of emergent vegetation.
6	8.5	Worth	43.4007988	-93.4113007	Grassed water way on north of road.
7	9.4	Worth	43.401001	-93.4290009	Wooded creek, slow flowing, both sides of 440th. Crops on either side.
8	10.6	Worth	43.4020004	-93.4481964	Follow road as it curves north and stop almost immediately. Marshy pond with cattails and wood duck boxes on right.
9	11.1	Worth	43.4082985	-93.4493027	Continue following the road north then follow bend back west. Stop almost immediately. Small grassy bordered stream on right side.
10	11.6	Worth	43.4119987	-93.4536972	Follow curve north and then another back west at 448th and cardinal. Large Lake, part of Elk Creek WA on right.